

DRAWING NUMBER
52/14

A PART OF LAKES OF LANTANA, A PLANNED UNIT DEVELOPMENT

LAKES OF SHERBROOKE PHASE 5

52/14

DRAWING NUMBER

DRAWING NUMBER

DRAWING NUMBER



BLOCK 33
PALM BEACH FARMS 66 PLAT No 3
PLAT BOOK 2, PAGES 45-54

NOTE:

There shall be no buildings or any kind of construction placed on utility or drainage easements.

There shall be no structures, trees or shrubs placed on drainage easements.

Approval of landscaping on utility easements other than water and sewer shall be only with the approval of all utilities occupying same.

Bearings refer to the State Road Department Right-of-Way Map of Lantana West Road, S. R. 812, Section No. 9353-151, dated January, 1953, the center line thereof bearing North 88°04'24" West.

All Palm Beach Farms Co. Plat No. 3 thirty foot reservations encompassed by the Lakes of Lantana Planned Unit Development have been abandoned by Resolution No. R-79-159 and recorded in Official Record Book 3012, Pages 285-287, Public Records of Palm Beach County Florida.

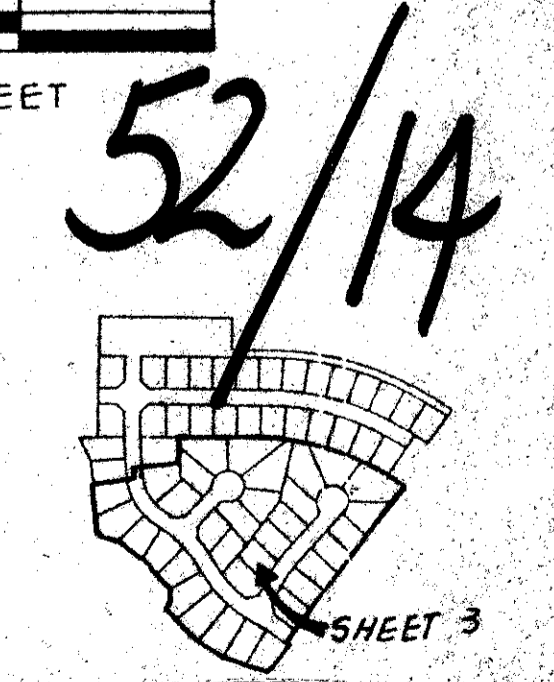
All distances shown along curves are arc lengths, and lines that are drawn as radial lines are radial lines unless noted otherwise.

□ - indicates Permanent Reference Monument.
○ - indicates Permanent Control Point.



0268-002
22/4/82

SUBDIVISION	Lakes of Sherbrooke
BOOK	52
FLOOD ZONE	B
QUAD #	48
SE PUD	Zone CODE 33463
PUD NAME	LAKES OF SHERBROOKE



DAIR & BRADY, INC.		The Lakes of Sherbrooke	
CONSULTING ENGINEERS & LAND SURVEYORS		Phase 5 Record Plat	
WEST PALM BEACH			
Dr. AM	F.R.	Scale	1" = 50'
Ch. 4p	P.G.	Date	JULY, 1982
Ag.		Job No.	3995P
			FP 1055
			SHEET 3 OF 3

PLAT CALCULATED BY: ED HAUCK